



INTRODUCING VORTEX

Designed for today's demanding environment and engineered to withstand high winds and driving rain over sustained periods of time, Vortex parasols are the ultimate shade and shelter for commercial premises.

20 years' experience of delivering high quality shade solutions led to the creation of Vortex parasols, providing strength and durability beyond traditional jumbo parasols.

Vortex can be used all year round, even in the harshest conditions.

Vortex provides the perfect combination of elegance, simplicity and immense strength.

Vortex is designed and manufactured in the UK and is the only parasol to conform to BS EN 13782 guaranteeing wind resistance to 100kph.



Highly durable parasols, designed for year round shade and shelter.

Strong enough to be left open, easy enough to close if required.

Made in Great Britain



Sizes

2.8m square
4.2m square
4.0m x 3.0m rectangle

Frame

Precision engineered in 316 grade stainless steel.

Canopy

New high tensile canopy with wire edge. Fire retardant and fully waterproof in Ferrari 502 Satin & STAM 6002. Available in 52 colours. Recyclable.

Installation

Inground base, deck mount or freestanding base options, for installation almost anywhere.

Options

Heating, lighting, guttering and sidesheets can be added to create year round comfort.

Printing

The perfect platform for high visibility branding.





SURVIVING THE ELEMENTS

Designed to provide year round shade and shelter, Vortex parasols are proven to stay up and open far longer than any conventional parasol or awning on the market today.

Launched in the UK in 2009 and subsequently installed in the US, Caribbean, Scandanavia, mainland Europe and India, Vortex parasols have a proven track record.

Installed throughout the UK from the Channel Islands to the North West coast of Scotland, Vortex parasols have withstood force 11 winds, snow, and torrential rain.

If you want a parasol built without compromise, you will need a Vortex.

It's elementary!



COMMERCIAL SENSE

Built to meet commercial requirements, Vortex is a 'put up and forget' solution. Strong enough to be left up and open all year round, easy to close and easy to remove, should it be required.

Vortex will provide shelter from the elements in the winter months and protection from the sun's harmful UV rays in the summer.

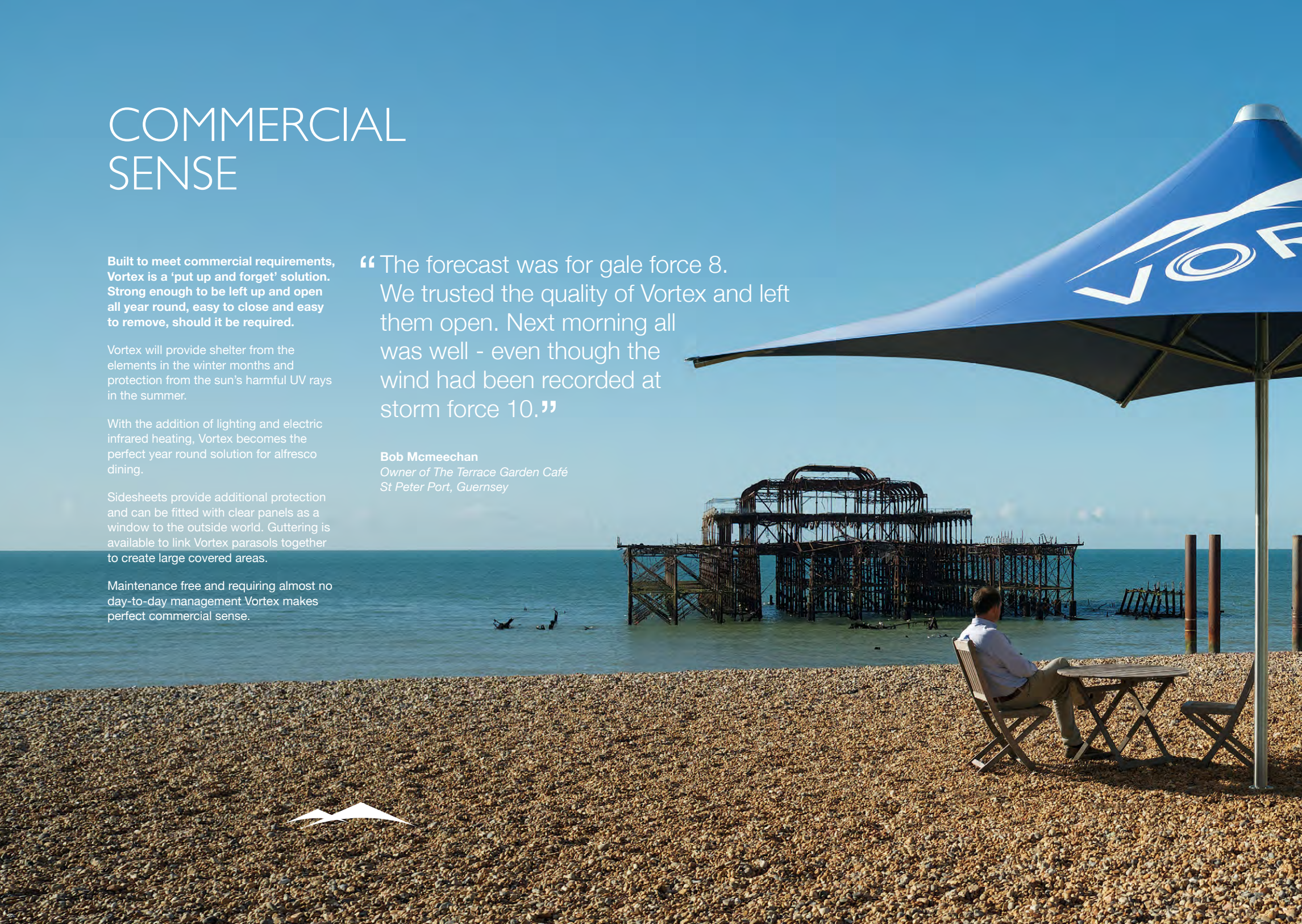
With the addition of lighting and electric infrared heating, Vortex becomes the perfect year round solution for alfresco dining.

Sidesheets provide additional protection and can be fitted with clear panels as a window to the outside world. Guttering is available to link Vortex parasols together to create large covered areas.

Maintenance free and requiring almost no day-to-day management Vortex makes perfect commercial sense.

“The forecast was for gale force 8. We trusted the quality of Vortex and left them open. Next morning all was well - even though the wind had been recorded at storm force 10.”

Bob McMeechan
*Owner of The Terrace Garden Café
St Peter Port, Guernsey*





MATERIAL ADVANTAGE

Vortex parasols are a venture into an area where few manufacturers dare to tread. High strength, high tensile parasols require a careful blend of materials and engineering to create the perfect product.

The frames are manufactured from 316 marine grade stainless steel, selected for its strength, durability and resistance to tarnishing. All fittings are also stainless steel, making Vortex parasols 100% recyclable.

The high tensile canopy is manufactured from Ferrari Précontraint @ 502 Satin or STAM 6002 PVC, the world's leading material for tension membrane structures.

Chosen for its dimensional stability it also forms a fully waterproof canopy with high UV resistance and fire retardancy.

Installation is possible almost anywhere. Inground bases provide a permanent fixing and are the best method of installation. Recognising that this is not always possible, there are also options available to bolt Vortex parasols down to existing solid foundations, fit them to existing parasol bases or install them on freestanding bases.

DETAIL MATTERS

Vortex has been designed to make the installation of heating and lighting as easy as possible. There are endless possible combinations available featuring heaters, lights, speakers, TV screens and cooling systems.

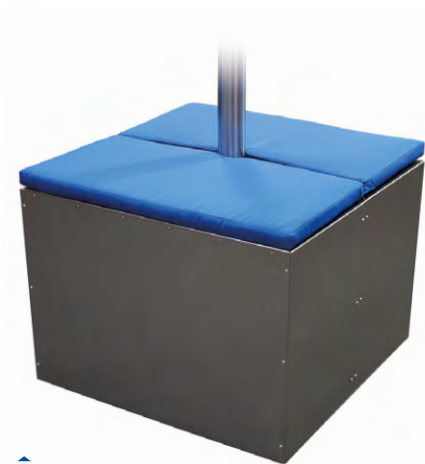
A highly efficient heat and light package has been developed in conjunction with Solamagic, one of Europe's leading outdoor heater manufacturers.

A custom made hub system, specially designed for Vortex can be easily fitted on site. This allows easy connection of 4 heaters with the minimum of fuss.

Solamagic pole mounted lights with 4 directional spots provide an easy to fit lighting kit. These can be fitted with standard 50W halogen bulbs or with LED's. An optional remote control can be fitted.

The standard heaters are 1.5kW Solamagic electric infrared heater with integrated switches for individual control, ensuring the heaters are easy to turn off if not required.

Options for heaters with built in remote control are also available.

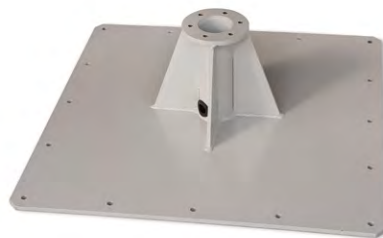


Base cover with cushion

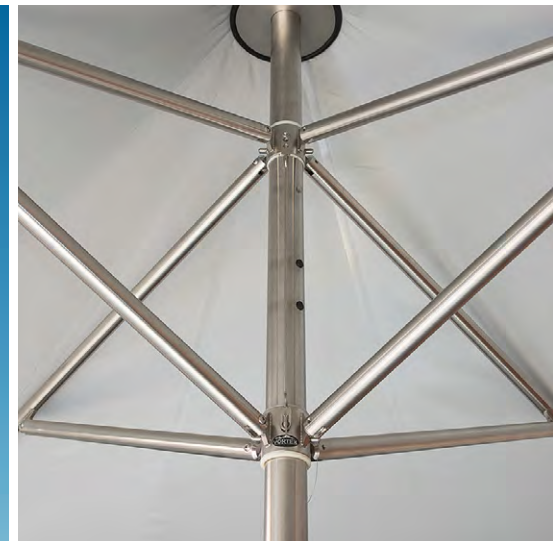
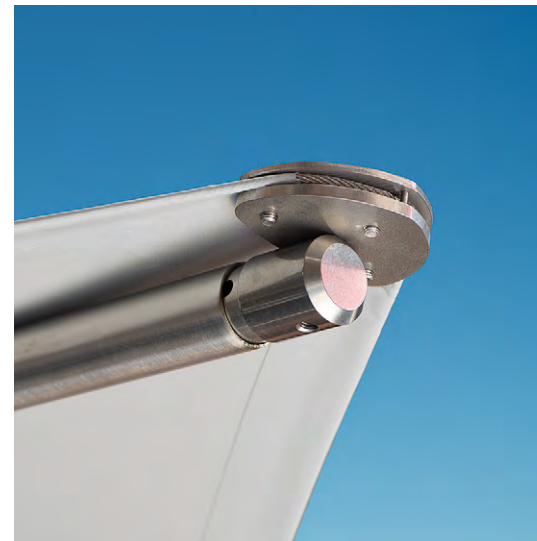
Base blanking cap



Inground base



Floor mounted base



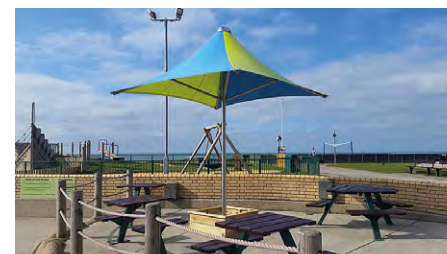
TO SUIT YOUR STYLE

FERRARI 502 SATIN PVC COLOURS

					
White	Boulder	Concrete	Porcelain green	Tennis	Spruce
					
		Black	Celadon	Steel blue	Lagoon
					
Metalic Velvet red	Metalic Automn	Metalic Aluminium	Dark blue	Thistle blue	Celestial blue
					
Champagne	Vanilla	Hemp	Victoria blue	Midnight blue	Marine
					
Sandy beige	Pepper	Camel			
					
Cocoa	Teak	Walnut stain			
					
Lemon	Buttercup	Dijon			
					
Orange	Carrot	Raspberry			
					
Poppy	Terracotta	Burgundy			
					
Aniseed	Olive	Moss green			

FERRARI STAM 6002 COLOURS

		
6002-20183	6002-10387	6002-20191
		
6002-20001	6002-20201	6002-20165
		
6002-20024	6002-20205	6002-20007
		
6002-20189	6002-20184	6002-20186
		
Blackout 6002-20213	Blackout 6002-20211	Blackout 6002-20209



Canopy colour

With 52 colours available, Vortex can be specified to create an eyecatching splash of colour, complement an existing theme, or blend into the background.

Canopy Material

Ferrari 502 Satin PVC is durable and long lasting. It is easy to clean and carries a 10 year limited warranty to ensure years of dependable service. **Ferrari STAM 6002** provides a textured matt finish to look more like traditional fabric. It carries a 5 year limited warranty.

Advertising

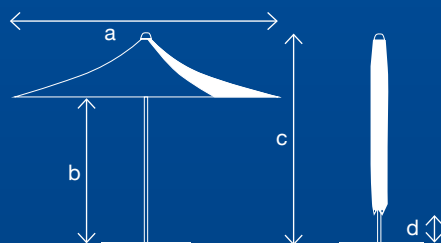
Designed for year round use, Vortex parasols provide the perfect platform for high visibility advertising. A digital mock up service is available to help maximise the impact for your brand.

Printing

Canopies can be screen printed with permanent logos. Temporary branding can be applied for specific events or campaigns.

Please note that the colours shown on this page offer only an approximation of their actual real-life counterparts, as the printing process for this brochure cannot accurately reproduce some colour values





SIZES AND DIMENSIONS

Size (a)	Shape	Mast diameter	Head clearance (b)	Total height (c)	Closed clearance (d)	Surface area
4.2m	Square	76mm	2270mm	3800mm	410mm	17.6m ²
2.8m	Square	76mm	2100mm	3200mm	1050mm	7.8m ²
3.0 x 4.0m	Rectangle	76mm	2270mm	3845mm	780mm	12m ²

ArcCan Shade Structures Ltd, Unit 9 Bridge Road Business Park, Haywards Heath, West Sussex, RH16 1TX
 Tel: 01444 450454 E-Mail: sales@arccan.com Website www.arccan.com